

BCT Rivet Nuts From BBA TS/KN-BCT Small Countersunk Head Knurled Body

Issue #3-2009

The high performance BCT is a new type of rivet nut designed to simplify rivet nut usage, whilst improving the strength and flexibility of this type of fastener.

BCT rivet nuts offer a much wider grip than conventional ones. For instance M5 grip range 0.5 - 5.0mm, M6 grip range 0.5 - 6.0 mm, M8 grip range 0.5 - 8.0 mm and so on.

BCT rivet nuts can be installed into a wide range of materials including metals, plastics, GRP, carbon fibre, timber products, and most materials which can accept a prepared hole.

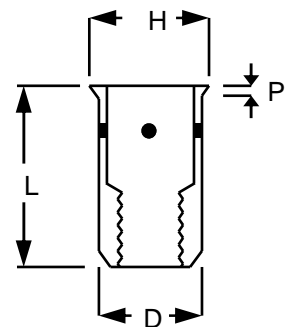
One BCT rivet nut will cover 2 grips in the smaller sizes and up to 4 grips in larger sizes so reducing inventory.

BCT rivet nuts are produced in 23B2 material and offer up to 25% better thread performance than standard rivet nuts.

BCT rivet nuts can be installed using standard air or hand operated rivet nut placing tools.



BCT Rivet Nuts TS/KN-BCT Small Countersunk Head Knurled Body



Thread Size	Steel Part Number	Aluminium Part Number	Brass Part Number	Grip Range	Hole Size -0.0 +0.1	D	L	H	P
M5	T5M-050.29TS/KN	A5M-050.29TS/KN	B5M-050.29TS/KN	0.5-5.0	8.0	7.9	16.5	9.0	0.5
	T5M-070.44TS/KN	A5M-070.44TS/KN	B5M-070.44TS/KN	2.5-7.0			18.5		
M6	T6M-045.33TS/KN	A6M-045.33TS/KN	B6M-045.33TS/KN	0.5-4.5			17.0		
	T6M-060.33TS/KN	A6M-060.33TS/KN	B6M-060.33TS/KN	0.5-6.0	9.0	8.9	18.0	10.0	0.5
M8	T6M-090.60TS/KN	A6M-090.60TS/KN	B6M-090.60TS/KN	3.5-9.0			21.0		
	T8M-060.41TS/KN	A8M-060.41TS/KN	B8M-060.41TS/KN	0.5-6.0			19.0		
M8	T8M-080.45TS/KN	A8M-080.45TS/KN	B8M-080.45TS/KN	0.5-8.0	11.0	10.9	22.0	12.0	0.6
	T8M-110.70TS/KN	A8M-110.70TS/KN	B8M-110.70TS/KN	4.5-11.0			25.0		
M10	T10M-070.48TS/KN	A10M-070.48TS/KN	B10M-070.48TS/KN	0.8-7.0			25.0		
	T10M-100.58TS/KN	A10M-100.58TS/KN	B10M-100.58TS/KN	1.5-10.0	13.0	12.9	28.0	14.0	0.6
	T10M-140.98TS/KN	A10M-140.98TS/KN	B10M-140.98TS/KN	5.5-14.0			32.0		

Steel inserts are supplied zinc plated and passivated. All plating materials are RoHS/WEEE compliant.

All dimensions in millimetres

74200 Rivet Nut Placing Tool

A fast ergonomically designed tool, designed to place threaded inserts quickly and uniformly. Using a hydro pneumatic spin-pull system the 742 has an automatic action to spin the insert onto the mandrel. Once the insert is engaged, a single pull of the trigger places the insert and reverses the tool off. The total cycle time is no more than a couple of seconds.

Nose equipment is quick and simple to change and mandrels (the only consumable item) are cheap and easy to come by in an emergency. Capable of placing inserts from M3 to M12, the 742 is easily adjusted for different material thicknesses.

